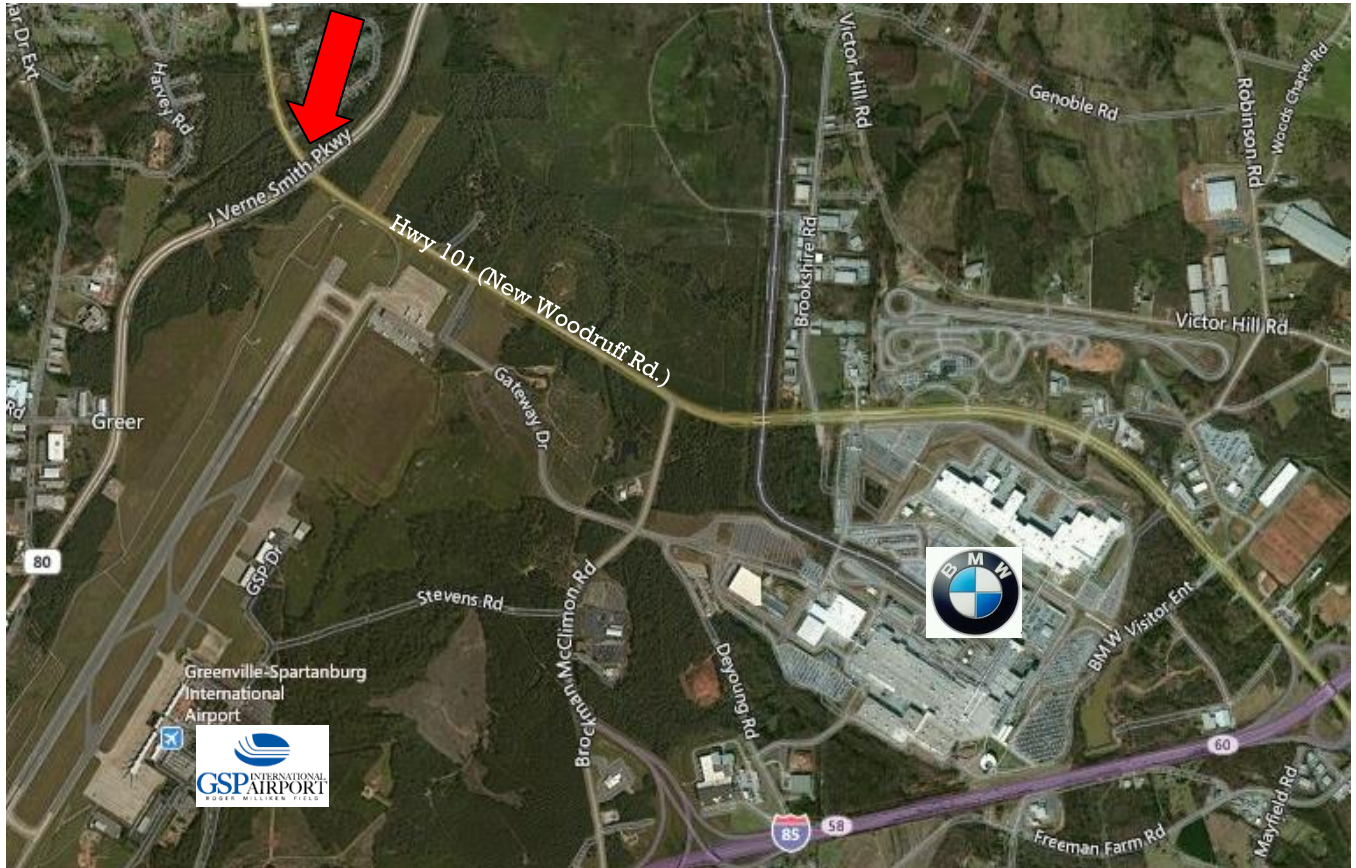


AVAILABLE

Highway 101 & J. Verne Smith Parkway
Greer, SC 29651

Commercial
Sales,
Leasing &
Investment



- 3.45± acres on corner of Highway 101 (New Woodruff Road) & J. Verne Smith Parkway
- Located approximately 1 mile to BMW & 3 miles to interstate I-85
- 350'± road frontage on New Woodruff Rd; 330'± road frontage on J. Verne Smith Parkway
- All utilities to site
- Great corner location with high visibility and exposure
- Spartanburg County Tax Map # 9-05-02-008.07
- Property subject to GSP Airport Environs Area Zoning Ordinance

Sale Price: \$ 343,275



No warranty or representation, expressed or implied, is made to the accuracy of the information contained herein, and the same is submitted subject to errors, omissions, change of price, rental or other conditions, imposed by the principles.

DALE SEAY

380 S. Pine Street
Spartanburg, SC 29302
Tel 864.583.1001 C 864-590-7658
Fax 864.585.6188
daleseay@spencerhines.com
www.spencerhines.com